

# SATABOY

HIGH PERFORMANCE SATA STORAGE BY  **nexsan**  
TECHNOLOGIES

Nexsan has once again raised the bar with the high performance SATABoy storage array. SATABoy is the latest addition to Nexsan's award-winning family of storage products, providing unprecedented performance in a compact package.

SATABoy provides organizations with unparalleled storage flexibility to meet real world business objectives. The highly scalable SATABoy enables cost-effective storage of large amounts of information online, such as fixed content, reference data, disaster recovery and disk-to-disk backup, while its exceptional performance ensures faster response times for mission critical applications. SATABoy is equally capable of delivering high IOPS for transactional applications and sustaining maximum MB/s throughput for high bandwidth applications such as streaming media.

## KEY BENEFITS

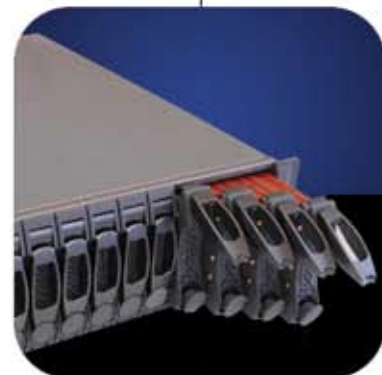
SATABoy incorporates SATA II technology along with advanced features such as dual RAID engines, a high performance cache mirroring ASIC, and active/active failover to deliver uncompromising availability and reliability, feature rich functionality, and high speed performance that exceeds the most demanding requirements for throughput and transaction processing applications. SATABoy's advanced RAID architecture delivers failsafe 24/7 operation for long-term information protection and uninterrupted business continuity.

## BEST IN CLASS PERFORMANCE

Designed to meet the challenges of the most demanding computing environments, SATABoy delivers unparalleled availability and performance in an SATA RAID device. With sustained throughput speeds of up to 370 MB/s per controller, SATABoy provides superior performance across all standard platforms and operating systems. Dual 2Gb fibre channel connectors on each controller enable easy and flexible implementation into a wide range of environments. SATABoy's unique combination of high performance and enormous capacity provides exceptional value that enhances all digital information storage applications, such as live on-line data, fixed content, tiered storage, broadcast/VOD and other business critical applications.

## SIMPLE TO USE

The advanced hardware design of SATABoy is supported by Nexsan's simple yet sophisticated Extreme Intelligence software, NexScan™, providing intuitive centralized management and monitoring. SATABoy's integrated NexScan management tool is platform independent with an intuitive design that ensures complete control over configuration and optimization of your storage environment.





## HIGHLIGHTS

High performance RAID solution built around the latest high-capacity SATA disk drives.

High availability - All mission critical components, including RAID controllers, are hot swappable and fully redundant.

Completely OS independent - No special software drivers required to connect to any host system.

NexScan™, our platform independent Web enabled GUI, provides simple system configuration, event and component monitoring from any standard web browser.

Tele-Guard™, Nexsan's phone home manager, enables pre-emptive degradation monitoring and assigned reporting of all system conditions.

Multi-box capable - NexScan enables remote management and configuration of multiple arrays from a single GUI.

High density / high capacity - SATABoy features 14 drives in only 3u of rack space.

Three Year Warranty - Advance Exchange, 24X7 Technical Support

## CONFIGURATION AND MANAGEMENT

NexScan™ is our embedded web-enabled Graphical User Interface (GUI). The platform independence of the SATABoy allows you to access your system from any standard Internet browser or from any host computer either directly connected or via a LAN or WAN with no software or patches required.

- ▶ Real-time event, hardware and thermal monitoring dynamically presented.
- ▶ Performance statistics monitoring; event logging, rebuild and verify utilities.

## TECH SPECS SATABOY

Host Interface / Connectivity	Dual 2Gb Fibre ports per controller
Controllers	Single or Dual Controller Active-Active Failover / Cache Coherency
Drive Bay Size	14 Bay / 3U
Cache	512MB (Expandable to 1GB)
Battery Back-up	Yes
RAID Levels	0, 1, 4, 5 and 1+0
Sustained Data Rates	Up to 370 MB/sec per controller
Luns Supported	32
Power	Dual PSU - 400W / 286VA Fully redundant – Load sharing
Cooling	Quad Redundant Blowers

## ADVANCED SYSTEM FEATURES

- ▶ Continual event monitoring with active user notification
- ▶ All major components hot-swap supported
- ▶ Dynamic spare pooling and dedicated spares; array verification
- ▶ Tele-Guard™ - Active/Dynamic phone home/email notification
- ▶ Active array status monitoring; adjustable stripe width; automatic sector remapping
- ▶ User-settable priorities for dynamic disk reconstruct, verify and create operations
- ▶ LUN Masking
- ▶ Multi-Box management feature to easily manage multiple SATABoy units
- ▶ SNMP traps supported
- ▶ Multiple RAID sets supported in a single unit
- ▶ System security password protected
- ▶ Serial port access available
- ▶ All system settings are stored in non-volatile flash memory in case of accidental power loss
- ▶ Parity Scrub / Array Verify scheduling - User defined automatic repair of all configured arrays



21700 Oxnard Street • Suite 1850 • Woodland Hills, CA 91367  
 Telephone: 866.4.NEXSAN • 818.715.9111 • Fax: 818.715.9175  
 European Office: +44 (0) 1332 291 600 • www.nexsan.com