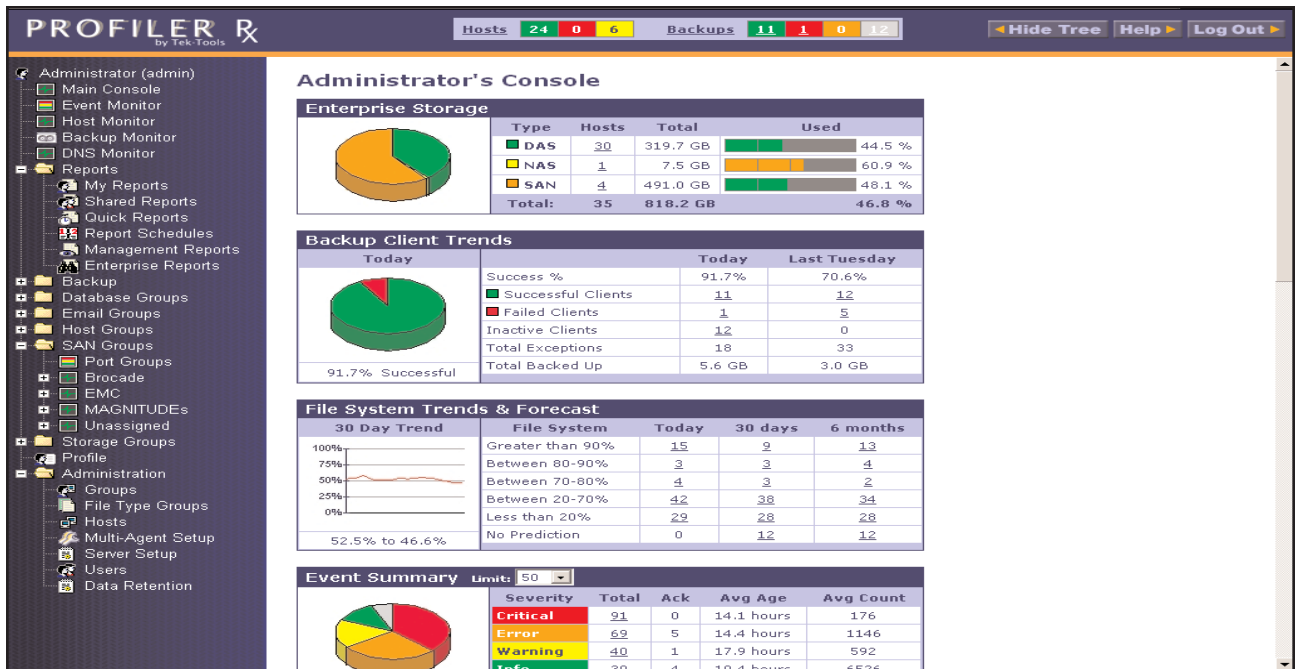


Profiler Rx Version 3.6

A Modular Monitoring and Reporting Suite, Targeting DAS, NAS, SAN and Backup Pain



The Profiler Rx Administrator's Console offers storage summaries that allow the user to easily drill down in order to address problems quickly.

PROFILER Rx ADDRESSES NUMEROUS PAIN POINTS

- File analysis** (*Windows NT, XP, 2000 & 2003, Solaris, NetWare, Linux, AIX, HP-UX, SCO, Tru64, NetApp, Celerra, NAS devices*)
 View information on specific files to critically analyze who's using your storage, what types of files are being stored and where and how old the files are in order to make decisions about their management accordingly
- Backup reporting** (*ARCserve, Legato Networker, VERITAS NetBackup & Backup Exec, Syncsort Backup Express, IBM TSM, StorageTek ACSLS*)
 Identify how much data is being backed up, if backups were successful, how long backups are taking, trend when the backup window will be exceeded and report SLAs
- Forecasting, trending and capacity planning**
 Project and schedule future storage/backup needs and expenditures
- Performance and Asset management**
 Identify server/storage/backup under and over utilization
- Application monitoring** (*Exchange, Oracle, MS SQL Server, DNS*)
 Identify hotspots and bottlenecks for quicker problem resolution in databases, email, DNS servers, etc.
- Chargeback**
 Grouping enables application and/or business unit views for chargeback and SLA initiatives
- Executive-level reporting**
 Granular asset and utilization visibility for use in strategic, continuity and management planning

What Is Profiler Rx?

Profiler Rx is a modular, Web-based, real-time and historical resource reporting application targeting DAS, NAS, SAN and Backup pain in customer environments. Every customer has different "pain" points and with Profiler Rx, you choose the solution modules that allow your organization to monitor specific pain points or the entire storage/server/backup network from one consolidated viewpoint.

Customers Have Different Problems, Profiler Rx Has The Right Prescription

Profiler Rx modules can solve problems and relieve pain at C-, Director, and Systems levels in the organization using different views of the same data.

Profiler Rx modules provide C-level executives with visibility that aids in business continuity, strategic planning and management. Directors and managers gain insight into their storage and backup environments for budgets, tactics, and execution goals. Administrators (DBAs, Systems) obtain visibility into the day-to-day operations of their IT centers.

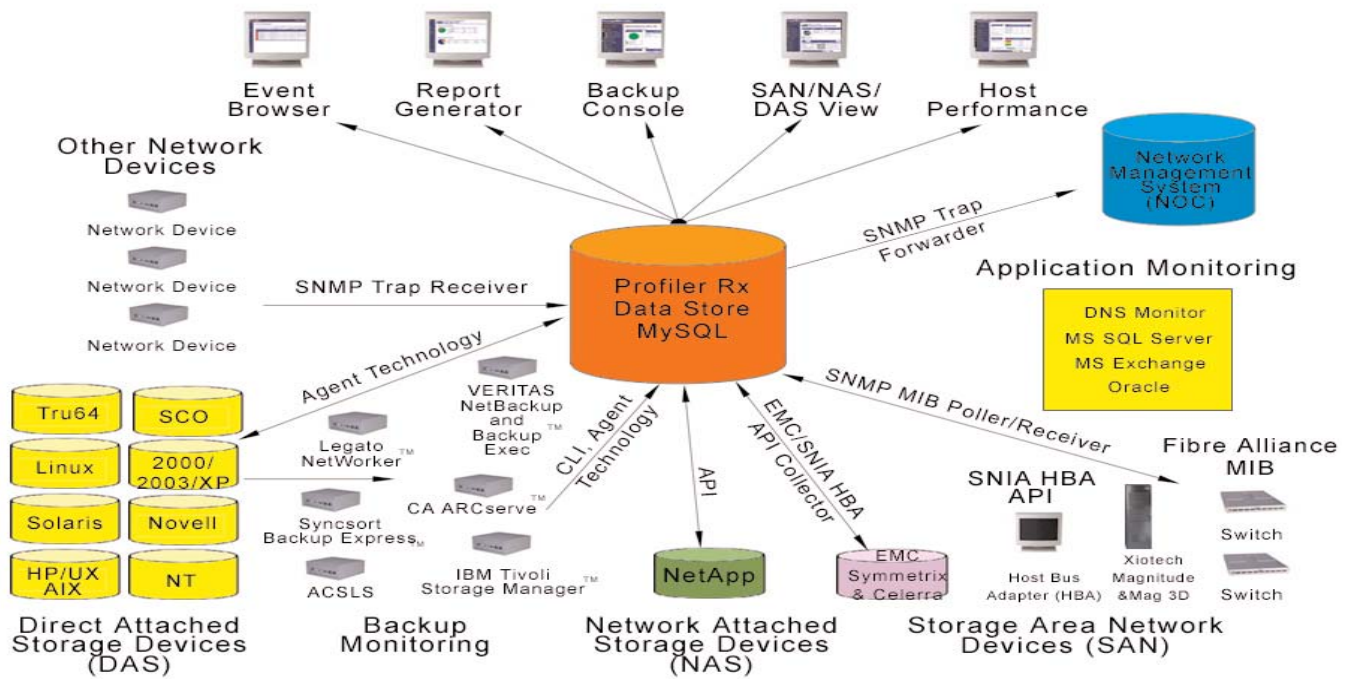
Profiler Rx modules install quickly and out-of-the-box, helping organizations reduce operational expenses, maximize storage investment and lower the total cost of ownership.

Intelligent Architecture With Seamless Integration

Profiler Rx leverages Web server-side technology for easy installation, quick performance and immediate payback.

The Profiler Rx Server, the core component of all Profiler Rx applications, is a high-speed MySQL database that collects information from all modules. Information is presented via HTML and is viewable with a Web-enabled browser. Profiler Rx comes complete with over 200 predefined reports and a full report wizard for customized reports.

PROFILER RX ARCHITECTURE



Added Switch, Application, Array, OS and Tape Drive Support

Profiler Rx 3.6 adds support for Cisco MDS switches, MS Exchange Server, EMC Celerra, Xitech Magnitude 3D, HP Tru64 and StorageTek ACSLS.

Profiler for Cisco switches accesses and reports information on assets, performance and status from both a historical and a real time perspective allowing users to track configuration changes or port load for balancing traffic.

Profiler for Exchange monitors and reports on size, historical trending and user file analysis at the server and mailbox levels, including performance monitoring. Mailboxes can be groomed for duplicated files and old messages that can be shifted to second-tier storage, thus reducing the chance of costly problems and inefficiency.

Profiler for Magnitude 3D's end-to-end SAN reporting includes asset, performance and storage allocation, event information and current and historical performance to identify problems in the SAN.

Profiler for Celerra allows users to view status or run configuration and performance reports including the breakdown of logical storage devices or file systems. In addition, Profiler for Celerra offers detailed file analysis and includes space reclamation abilities.

Profiler for Tru64 provides OS host monitoring including file analysis, usage trend reporting and capacity planning.

Profiler for ACSLS monitors tape drive usage by server and duration allowing tuning and balancing of costly backup environments.

For More Information

Tek-Tools, Inc. Corporate Headquarters
4020 McEwen Dr., Suite 105
Dallas, TX 75244
www.tek-tools.com

T: 1 888 835 8665
E: contact@tek-tools.com

Tek-Tools, Inc. is a recognized leader in enterprise storage and backup resource management. Tek-Tools' Profiler Rx Suite empowers enterprises to reduce operational expenses and maximize their storage investment. Tek-Tools' mission is to address "where storage and networking meet™" by delivering easy-to-use, quality products that provide organizations with tangible economic return.

Profiler Rx is a trademark of Tek-Tools, Inc. All other trademarks in this document are the properties of their respective owners.

SYSTEM SPECIFICATIONS

Current Release Date: Q3, 2004

SERVER REQUIREMENTS

Memory Needed: 512 MB
Disk Space: 1 GB
Sun Microsystems Solaris
Microsoft Windows 2000 Server or Professional

FRONT-END REQUIREMENTS

MS Internet Explorer
Netscape/Mozilla

PROFILER RX SOLUTION MODULES

- Profiler for OS (supporting Windows NT, 2000, XP & 2003, Solaris, NetWare, Linux, AIX, HP-UX, SCO and Tru 64. Includes complete file analysis)
- Profiler for NAS (Network Appliance Filers, EMC Celerra, etc.)
- Profiler for EMC Symmetrix
- Profiler for Xitech Magnitude & Magnitude 3D
- Profiler for MS Exchange Server
- Profiler for Switches/HBA (Cisco, McDATA, Brocade, etc.)
- Profiler for Backup (CA BrightStor ARCserve, Legato NetWorker, VERITAS NetBackup and Backup Exec, Syncsort Backup Express, IBM Tivoli Storage Manager, ACSLS)
- Profiler for Databases (Microsoft SQL Server, Oracle RDBMS)
- Profiler for DNS